

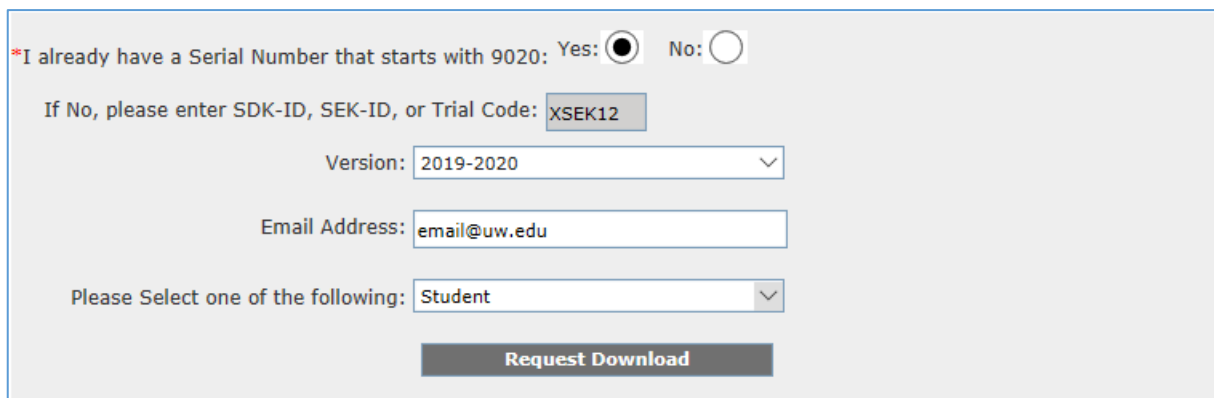
SOLIDWORKS Installation Guide (Student License)

INTRODUCTION

There are 3 different types of student licenses, Student Edition, Student Standard, and Student Premium. Each of these editions will have a serial number that begins with 9020. Student Edition is a 1 year term license purchased by the student from the student store: <https://store.solidworks.com/studentstore/default.php>. The Student Standard and Premium licenses are given for free to universities where having between 45-99 seats on the network license will entitle you to Student Standard and 100+ seats entitles you to Student Premium.

STEPS IN PROCESS

1. Navigate to the website https://www.solidworks.com/sw/education/SDL_form.html
2. If you have your student edition serial number, select 'Yes' and continue to fill out the form. If you do not have a student serial number yet, please request this from GSC or purchase this from the Student Store as linked in the introduction. When you are finished, press 'Request Download'.



*I already have a Serial Number that starts with 9020: Yes: No:

If No, please enter SDK-ID, SEK-ID, or Trial Code:

Version:

Email Address:


Please Select one of the following:

Request Download

3. Read and agree to the terms of service and press download on the next page

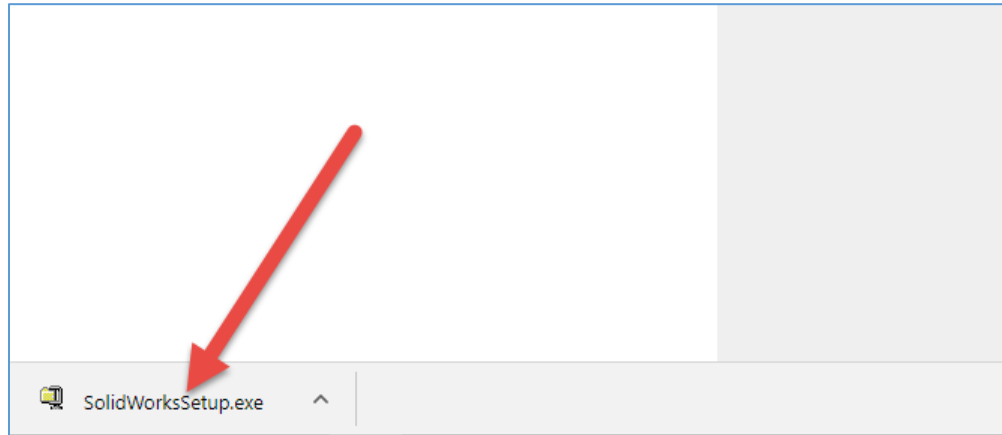
SOLIDWORKS Community Access

For qualified educators, makers, hobbyists, military, students and sponsored organizations.

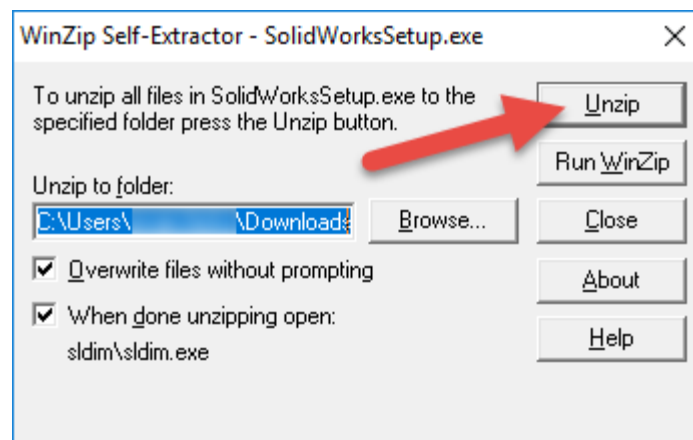
No Email with SEK Student Engineering Kit
 **Download** Win7/Win10 64-bit



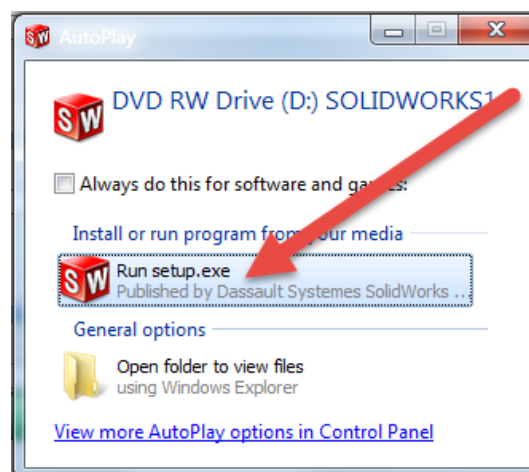
4. After the download has finished, locate the containing folder in your downloads bar or folder and click to run it.



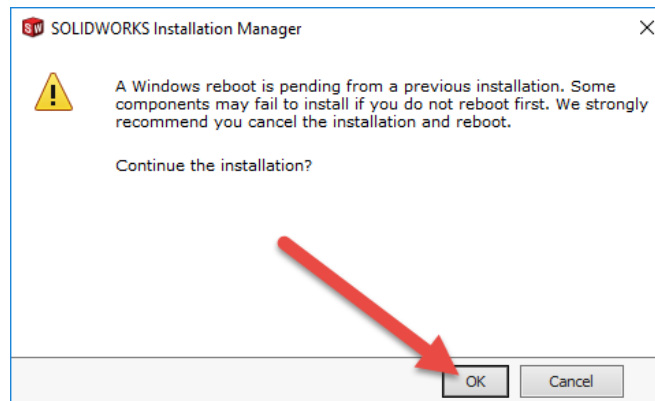
5. Click **Unzip**. Skip to step 14.



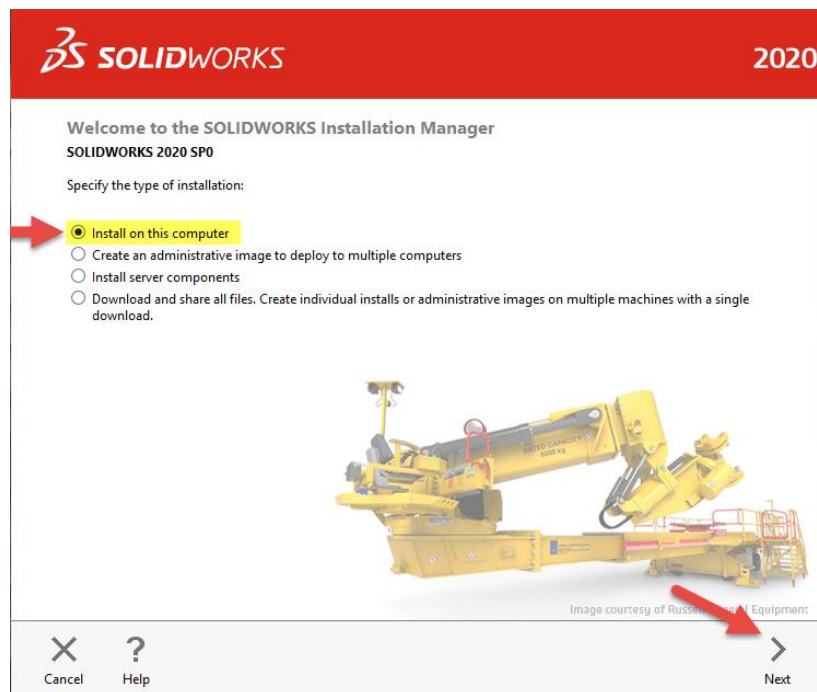
6. If installing from a media disk, click **Run setup.exe**



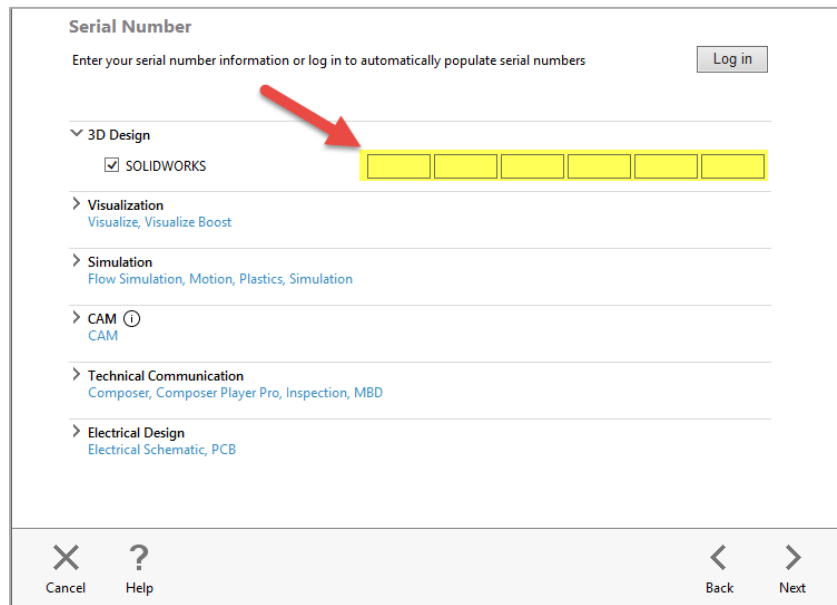
7. If you receive this message, click OK.



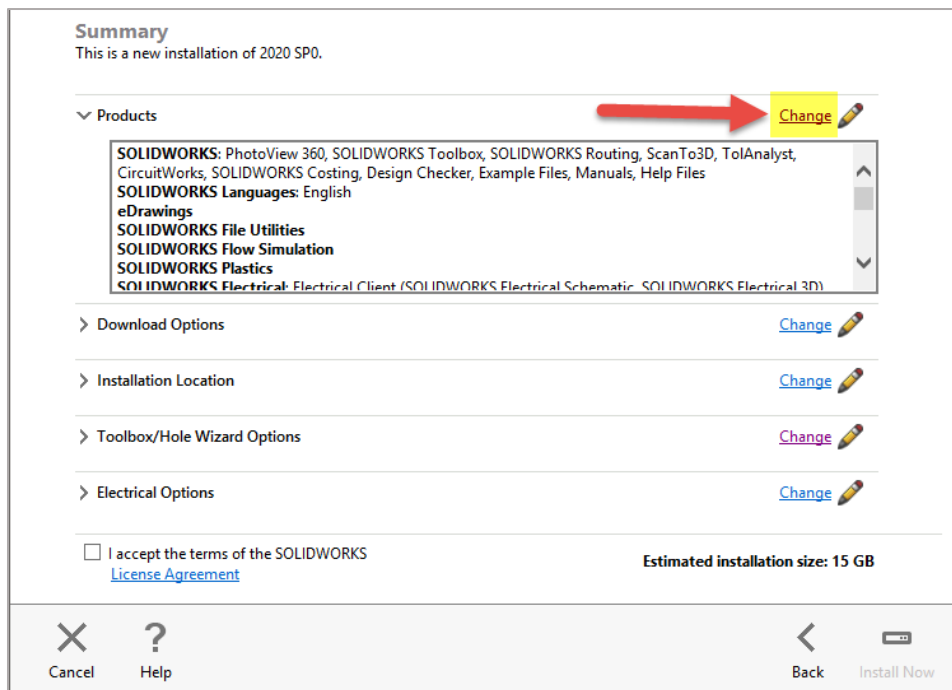
8. Ensure Install on this computer is selected for the type of installation and click Next.



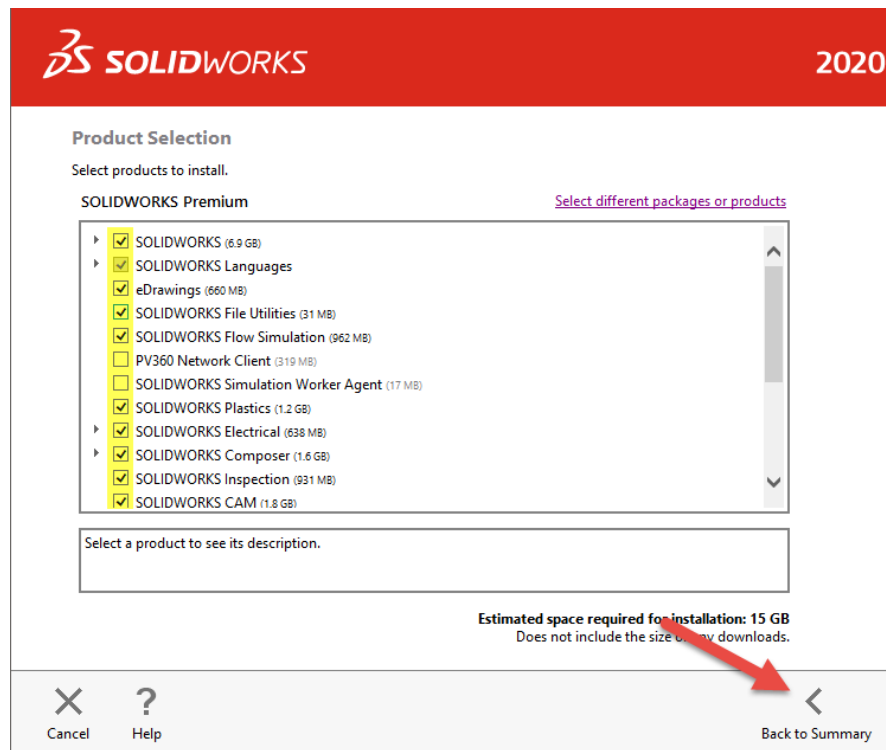
9. Enter your SolidWorks serial number as well as any other serial numbers for products you would like to install, and then click **Next**.



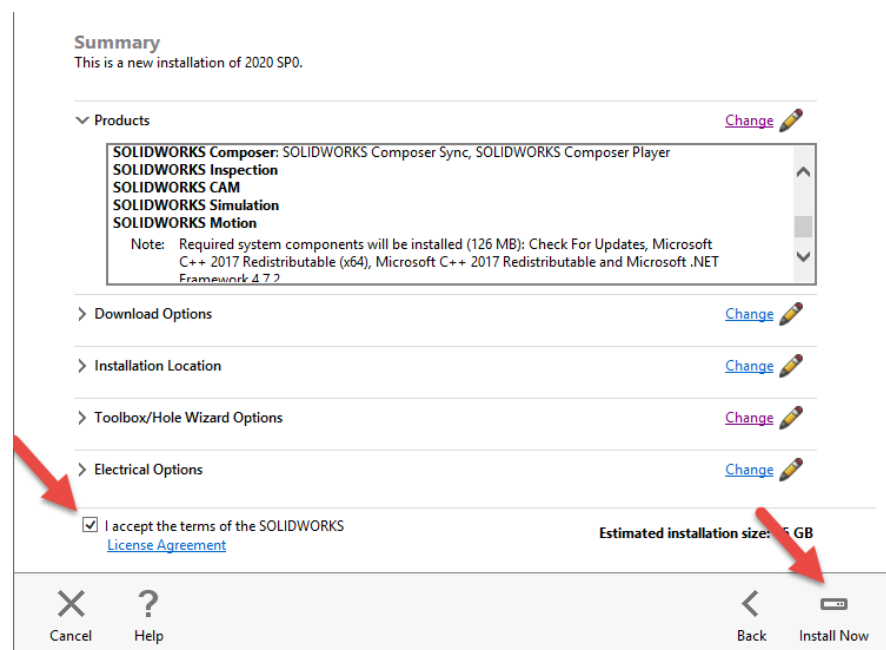
10. Select **Change** to change which products will be installed.



11. Ensure all of the products you wish to install are checked. Then click **Back to Summary**.



12. Adjust any of the other download, installation, or toolbox location settings if needed, otherwise they can be left on their defaults. Accept the terms of SOLIDWORKS. Then click **Install Now**.



13. We recommend joining the Customer Experience Improvement Program, which sends your log files to SolidWorks and can help us diagnose and troubleshoot problems you may have such as crashing. This is however completely optional. When you are done, click **Finish**.


Installation is Complete

Show me What's New in SOLIDWORKS 2020.

Join the SOLIDWORKS Customer Experience Improvement Program

- Participation directly improves the stability of SOLIDWORKS products.
- Data are continuously analyzed to help determine crash causes, create solutions and identify stability trends.
- System performance is not affected by participating in this program.

[Tell me more](#)

Yes, I want to join 

No, thank you

Remind me later

Thank you for joining!

